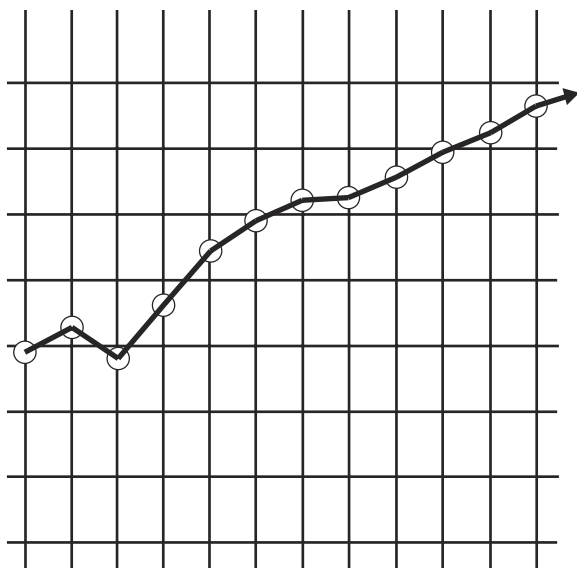


2008-2009 Union Construction Wage and Benefit Rate Guide



Published by:
Construction Industry Service Corporation
(CISCO)

PLEASE NOTE:

This guide contains the wage and benefit rates contained in the **current contract year**. “*Effective Dates*” and “*Expiration Dates*” refer to these wage rates, but not necessarily the contracts which contain them.

This handbook has been prepared from information collected and maintained by CISCO. Reasonable efforts have been made to ensure the accuracy of this data. However, due to the nature of the information and the collection process, accuracy cannot be guaranteed. CISCO disclaims any liability from any damages of any kind which may result from the use of this information.

TABLE OF CONTENTS

Boilermakers.....	Page 4
Bricklayers.....	Pages 5-6
Carpenters.....	Pages 7-17
Cement Masons.....	Pages 18-22
Ceramic Tile Layers & Finishers.....	Pages 23-24
Construction Machinists.....	Page 25
Drywall Painters & Finishers.....	Page 26
Electricians.....	Pages 27-38
Elevator Constructors.....	Page 39
Glaziers.....	Pages 40-41
Heat & Frost Insulators.....	Page 42
Ironworkers.....	Pages 43-46
Laborers.....	Pages 47-49
Operating Engineers.....	Pages 50-52
Painters.....	Pages 53-54
Pipefitters.....	Page 55
Plasterers.....	Pages 56-58
Plumbers.....	Pages 59-60
Plumbers & Pipefitters.....	Pages 61-63
Roofers.....	Page 64
Sheet Metal Workers.....	Pages 65-66
Sprinkler Fitters.....	Page 67
Teamsters.....	Pages 68-73
Technical Engineers.....	Page 74
Terrazo Mechanics & Finishers.....	Pages 75-76
Tuckpointers.....	Page 77

Boilermakers Local #1

2941 S. Archer Avenue

Chicago, IL 60608

Phone: (773) 247-5225 Fax: (773) 247-0083

Effective Date	07.01.08
Mechanic Rate	\$39.27+ 5% Term
Foreman Rate	\$42.80+ 5% Term
General Foreman	\$43.98+ 5% Term
Senior Gen. Foreman	\$45.55+ 5% Term
Dues Deduction	4%
PAC Deduction	\$0.05*
Health/Welfare	\$6.72
Pension Fund	14.25% of all wages
Annuity Fund	5% + \$1.00/hour
Apprenticeship Fund	\$0.35
M.O.S.T. Fund	\$0.24
Sub Fund	3.5% + \$0.60/hour
Legal Fund	\$0.30
Education & Training	\$0.30
Expiration Date	07.30.09

* \$0.10 to be deducted from pay upon voluntary written authorization

Bricklayers D.C. #1 (NIMEC)

1950 W. 43rd Street

Chicago, IL 60609

Phone: (773) 650-1841 Fax: (773) 650-1906

Effective Date	06.01.08
Base Rate	\$38.03
Dues Deduction	2.8%
Health/Welfare	\$8.00
Pension	\$4.97
DCTC	\$0.28
Safety	\$0.01
Annuity	\$4.00
ILMI	\$0.18
IMI	\$0.42
MIAF	\$0.06
ICE	\$0.01
IPF	\$1.00
LMCC	\$0.10
Total Benefits	\$19.03
Total Package	\$57.06
Expiration Date	05.31.09

Bricklayers D.C. #1 (Independent)

1950 W. 43rd Street

Chicago, IL 60609

Phone: (773) 650-1841 Fax: (773) 650-1906

Effective Date	06.01.08
Base Rate	\$38.03
Dues Deduction	\$1.60
Health/Welfare	\$8.00
Pension	\$5.97*
DCTC	\$0.28
MIAF	\$0.06
Training	\$0.25
Safety	\$0.01
Annuity	\$4.00**
Other	\$0.71***
Total Benefits	\$19.03
Total Package	\$57.06
Expiration Date	05.31.09

* \$4.97 Pension, \$1.00 IPF

** For each hour or portion thereof where employee is paid

*** IMI-\$0.42, LMCC-\$0.10, ICE-\$0.01, ILMI-\$0.18

Chicago Reg. Council of Carpenters

Commercial (Cook, Lake, & DuPage Counties)

12 E. Erie Street

Chicago, IL 60611

Phone: (312) 787-3076 Fax: (312) 951-1540

Effective Date	06.01.08
Base Rate	\$39.77
Foreman Rate	\$41.77
Dues Deduction	3%
Health/Welfare	\$9.46
Pension/Annuity	\$7.79
Training	\$0.49
Safety	\$0.01
CISCO	\$0.01
MCI AF	\$0.06
Other	\$0.10*
Total Benefits	\$17.92
Total Package	\$57.69
Expiration Date	05.31.09

* \$0.02 Labor-Management Promotion, \$0.06 Int'l
Apprentice Safety, \$0.02 Labor Management Fund.

Chicago Reg. Council of Carpenters

Residential(Cook, Lake, & DuPage Counties)

12 E. Erie Street

Chicago, IL 60611

Phone: (312) 787-3076 Fax: (312) 951-1516

Effective Date	10.01.08
Base Rate	\$37.77
Dues Deduction	3%
Health/Welfare	\$9.46
Pension/Annuity	\$7.79
Apprentice	\$0.49
Labor/Mgmt. Promotional Fund	\$0.02
International Apprenticeship, Safety, Labor Management Fund	\$0.08
Industry Advancement	\$0.04
Total Benefits	\$17.88
Total Package	\$55.65
Expiration Date	09.30.09

Chicago Reg. Council of Carpenters

Commercial(Kane, Kendall, McHenry Counties)

12 E. Erie Street

Chicago, IL 60611

Phone: (312) 787-3076 Fax: (312) 951-1540

Effective Date	06.01.08
Base Rate	\$39.77
Dues Deduction	3%
Health/Welfare	\$9.46
Pension	\$5.30
Training	\$0.49
Other Deductions	\$2.66*
Total Benefits	\$17.91
Total Package	\$57.68
Expiration Date	05.31.09

* \$2.50 Retirement Savings, \$0.02 Labor/Mgmt Promotion Fund, \$0.08, Int'l Appr. Safety, Labor Mgmt. Fund, \$0.06 Industry Advancement

Chicago Reg. Council of Carpenters
Residential (Kane, Kendall, & McHenry Counties)
 12 E. Erie Street
 Chicago, IL 60611
 Phone: (312) 787-3076 Fax: (312) 951-1516

Effective Date	10.01.08
Base Rate	\$37.77
Dues Deduction	3%
Health/Welfare	\$9.46
Pension/Annuity	\$5.30
Apprentice	\$0.49
Promotion	\$0.06
International Apprenticeship, Safety, Labor Management Fund	\$0.08
Industry Advancement	\$0.04
Labor Management	\$0.02
Retirement Savings	\$2.49
Total Benefits	\$17.88
Total Package	\$55.65
Expiration Date	09.30.09

Carpenters Local #174

Commercial (Will County)

1407 Essington Road

Joliet, IL 60435

Phone: (815) 725-9473 Fax: (815) 725-9485

Effective Date	06.01.08
Base Rate	\$39.55
Dues Deduction	3%
Health/Welfare	\$8.43
Pension	\$11.36
Apprentice Fund	\$0.49
Three Rivers Alliance	\$0.02
International Safety, Labor/Mgmt.	\$0.08
Labor Management Fund	\$0.02
Industry Advancement	\$0.07
Total Benefits	\$20.47
Total Package	\$60.02
Expiration Date	05.31.09

Carpenters Local #174

Residential (Will County)

1407 Essington Road

Joliet, IL 60435

Phone: (815) 725-9473 Fax: (815) 725-9485

Effective Date	10.01.08
Base Rate	\$37.77
Dues Deduction	3%
Health/Welfare	\$8.43
Pension	\$8.82
Promotion	\$0.08
Apprenticeship	\$0.49
Industry Advancement	\$0.04
Labor Management	\$0.02
Total Benefits	\$17.88
Total Package	\$55.65
Expiration Date	09.30.09

Chicago Reg. Council of Carpenters

Commercial (Grundy County)

12 E. Erie Street

Chicago, IL 60611

Phone: (312) 787-3076 Fax: (312) 951-1516

Effective Date	06.01.08
Base Rate	\$39.77
Dues Deduction	3%
Health/Welfare	\$9.46
Pension	\$5.30
Training	\$0.49
Industry Advancement	\$0.07
Retirement Savings	\$2.50
Labor Management Promo. Fund	\$0.02
Int'l Appr., Safety, Labor Mgmt.	\$0.08
Three Rivers Alliance	\$0.01
Total Benefits	\$17.93
Total Package	\$57.70
Expiration Date	05.31.09

Chicago Reg. Council of Carpenters

Residential (Grundy County)

12 E. Erie Street

Chicago, IL 60611

Phone: (312) 787-3076 Fax: (312) 951-1516

Effective Date	10.1.08
Base Rate	\$37.77
Dues Deduction	3%
Health/Welfare	\$9.46
Pension	\$5.30
Training	\$0.49
Promotion	\$0.02
International Apprenticeship, Safety, Labor Management Fund	\$0.08
Industry Advancement	\$0.04
Retirement Savings	\$2.49
Total Benefits	\$17.88
Total Package	\$55.65
Expiration Date	09.30.09

Carpenter Millwrights #1693

(Cook, Lake, & DuPage Counties)

930 N. York Road, Suite 202

Hinsdale, IL 60521

Phone: (630) 325-6036 Fax: (630) 325-6052

Effective Date	06.01.08
Base Rate	\$39.77
Dues Deduction	3%
Health/Welfare	\$9.46
Pension	\$7.79
Training	\$0.49
Safety	\$0.01
CISCO	\$0.01
Industry Advancement Fund	\$0.06
Labor Management Fund	\$0.02
Int'l Safety/Labor Mgmt Fund	\$0.08
Total Benefits	\$17.92
Total Package	\$57.69
Expiration Date	05.31.09

Carpenter Millwrights #1693

(Kane, Kendall, & McHenry Counties)

930 N. York Road, Suite 202

Hinsdale, IL 60521

Phone: (630) 325-6036 Fax: (630) 325-6052

Effective Date	06.01.08
Base Rate	\$39.77
Dues Deduction	3%
Health/Welfare	\$9.46
Pension	\$5.30
Training	\$0.49
Safety	\$0.01
Industry Advancement Fund	\$0.05
Labor Management Fund	\$0.02
Int'l Safety/Labor Mgmt Fund	\$0.08
Retirement Savings	\$2.50
Total Benefits	\$17.90
Total Package	\$57.67
Expiration Date	05.31.09

Carpenter Millwrights #1693

(Grundy County)

930 N. York Road, Suite 202

Hinsdale, IL 60521

Phone: (630) 325-6036 Fax: (630) 325-6052

Effective Date	06.01.08
Base Rate	\$39.77
Dues Deduction	3%
Health/Welfare	\$9.46
Pension	\$5.30
Training	\$0.49
International Fund	\$0.08
Industry Advancement Fund	\$0.07
Three Rivers Constr. Alliance	\$0.02
Labor Management Fund	\$0.02
Total Benefits	\$17.94
Total Package	\$57.71
Expiration Date	05.31.09

Cement Masons #11, Area 161

(Will & Grundy Counties)

100 Republic Avenue, Unit 17A

Joliet, IL 60435

Phone: (815) 725-0487 Fax: (815) 725-0644

Effective Date	06.01.08
Base Rate	\$39.50
Foreman Rate	\$41.50
Dues Deduction Local	\$1.25
Dues Deduction International	\$0.57
Health/Welfare	\$7.25
Pension	\$5.00
Training	\$0.15
Industry Fund	\$0.08
Three Rivers Alliance	\$0.02
Tax-Deferred Income Fund	\$5.43
Total Benefits	\$17.93
Total Package	\$57.43
Expiration Date	05.31.09

Cement Masons #11, Area 362

(Lake County)

28874 W. Rand Road., Unit B

Lakemoor, IL 60051

Phone: (815) 363-6933 Fax: (815) 363- 6934

Effective Date	06.01.08
Base Rate	\$38.50
Foreman Rate	\$40.50
Health/Welfare	\$8.25
Pension	\$5.83
Training	\$0.15
Promotion	\$0.08
Tax-Deferred Income Fund	\$4.50
Total Benefits	\$18.81
Total Package	\$57.31
<i>After-Tax Deductions</i>	
Vacation Fund	\$2.50
International Dues	\$0.57
Local Dues	\$1.30
Expiration Date	05.31.09

Cement Masons #11, Area 638

(Kane, Kendall, McHenry, & DeKalb Counties)

28874 W. Rand Road, Unit B

Lakemoor, IL 60051

Phone: (815) 363-6933 Fax: (815) 363-6934

Effective Date	06.01.08
Base Rate	\$39.00
Foreman Rate	\$41.00
Health/Welfare	\$7.25
Pension	\$5.41
Training	\$0.15
Promotion	\$0.08
Tax-Deferred Income Fund	\$5.40
Total Benefits	\$18.29
Total Package	\$57.29
<i>After Tax Deductions</i>	
International Dues	\$0.57
Local Dues	\$1.30
Vacation Savings	\$2.70
Expiration Date	05.31.09

Cement Masons Local #502

(Cook County)

739 25th Avenue

Bellwood, IL 60104

Phone: (708) 544-9100 Fax: (708) 544-9117

Effective Date	06.01.08
Base Rate	\$41.85
Foreman Rate	\$43.85
Dues Deduction	\$1.72*
Savings Fund	\$5.00
Health/Welfare	\$7.85
Pension	\$7.41
Training	\$0.17
Safety	\$0.01
Promotion	\$0.06
CISCO	\$0.01
Total Benefits	\$15.51
Total Package	\$57.36
Expiration Date	05.31.09

* Working dues will be deducted at \$1.72 per WORK hour with no adjustment for OVERTIME or DOUBLE time.

Cement Masons Local #803

(DuPage County)

240 W. St. Charles Road

Villa Park, Illinois 60181

Phone: (630) 941-9458 Fax: (630) 833-3508

This is the 3rd year of a 4-year agreement

Effective Date	06.01.08
Base Rate	\$38.00
Foreman Rate	\$40.00
Dues Deduction	\$1.72
Health/Welfare	\$7.25
Pension	\$8.20
Training	\$0.38
Safety	\$0.01
Vacation Fund	\$3.00
MCI AF	\$0.06
Tax-Deferred Savings Fund	\$3.50
Total Benefits	\$19.40
Total Package	\$57.40
Expiration Date	05.31.09

Ceramic Tile Finishers 67 (BAC)

6425 S. Central Avenue

Chicago, IL 60638

Phone: (773) 884-6500 Fax: (773) 735-9815

Effective Date	06.01.08
Base Rate	\$32.15
Dues Deduction	\$1.50*
Health/Welfare	\$6.15
Pension	\$3.35
Promotional Fund	\$0.08
Apprenticeship Fund	\$0.10
Local 67 PAC Fund	\$0.01
Bricklayer Int'l Pension Fund	\$1.00
Int'l Masonry Institute	\$0.40
Local 67 Annuity Fund	\$3.02
Total Benefits	\$14.11
Total Package	\$46.26
<i>To be allocated 6.1.09</i>	\$3.10
Expiration Date	5.31.09

* \$1.04 Local Dues, \$0.46 Int'l Dues

Ceramic Tile Layers 67 (BAC)

6425 S. Central Avenue

Chicago, IL 60638

Phone: (773) 884-6500 Fax: (773) 735-9815

This is the 2nd year of a 3-year agreement
(6.1.07 - 5.31.10)

Effective Date	06.01.08
Base Rate	\$38.63
Foreman Rate	\$42.63
Dues Deduction	\$1.77*
Health/Welfare	\$6.15
Pension	\$3.35
Local 67 Apprenticeship Fund	\$0.18
Local 67 PAC Fund	\$0.01
Promotion	\$0.08
Bricklayer Int'l Pension Fund	\$1.50
Int'l Masonry Institute	\$0.50
IL Dist. Council #1 Annuity Fund	\$4.16
Total Benefits	\$15.93
Total Package	\$54.56
Expiration Date	05.31.09

* \$1.23 Local Dues, \$0.54 Int'l Dues

Construction Machinists #126

120 E. Ogden Avenue, Suite 18-A

Hinsdale, IL 60521

Phone: (630) 655-1930 Fax: (630) 655-0942

Effective Date	07.01.08
Base Rate	\$40.53
Foreman Rate	\$42.53
Vacation/Holiday Fund	\$2.65
Health/Welfare	\$7.00
Pension	\$7.67
Total Benefits	\$15.32
Total Package	\$55.85
Expiration Date	06.30.09

Drywall Finishers/Painters D.C. 14

(Cook & Lake Counties)

1456 W. Adams

Chicago, IL 60607

Phone: (312) 421-0046 Fax: (312) 421-7884

Effective Date	06.01.08
Base Rate	\$36.90
Foreman Rate	*
Dues Deduction	2%
Health/Welfare	\$7.35
Pension	\$8.40
Joint Cooperation	\$0.25
Education & Scholarship	\$0.03
Industry Promotion	\$0.03
JATC	\$0.51
Total Benefits	\$16.57
Total Package	\$53.47
Expiration Date	05.31.09
<i>Deductions from Wages</i>	
Savings	\$1.00/hr
Local Political Committee	\$0.05**

* Present rate at 2 hours more pay per day for General Foremen, 1 hour for Foreman, and one-half hour for Sub-Foreman

** Voluntary Deduction

Electricians #9 Outside Linemen

(Cook, Will, & Grundy Counties)

4415 W. Harrison Street

Hillside, IL 60162

Phone: (708) 449-9000 Fax: (708) 449-9001

Effective Date	05.26.08
Base Rate	\$38.60
Foreman Rate	\$44.97
Dues Deduction	1.5%
Health/Welfare	\$9.11
Defined Benefit Pension	\$4.68
Defined Contribution Pension	\$5.50
Training	\$0.45
Administrative Maint. Account	\$0.07
ALBAT	\$0.29
NEBF	\$1.16
Total Benefits	\$21.26
Total Package	\$59.86
Expiration Date	05.24.09

Electricians Local #117

(McHenry & Northern Kane Counties)

765 Munshaw Lane

Crystal Lake, IL 60014

Phone: (847) 854-7200 Fax: (847) 854-7266

Effective Date	06.01.08
Base Rate	\$41.41
Foreman Rate	\$45.55
Dues Deduction	3%
Personal Funds	8%
Health/Welfare	\$10.14
Pension	\$8.28
Apprenticeship	\$0.52
NECA Service Charge	\$0.25
Other Deductions	\$1.61*
Total Benefits	\$20.39
Total Package	\$62.21
Expiration Date	05.31.09

* NEBF- \$1.24, LMCC- \$0.21, Admin. Maintenance- \$0.16

Electricians Local #117

(Telecommunications)

(McHenry & Northern Kane Counties)

765 Munshaw Lane

Crystal Lake, IL 60014

Phone: (847) 854-7200 Fax: (847) 854-7266

This is a yearly agreement.

Effective Date	6.2.08
Base Rate	\$34.46
Foreman Rate	\$36.56
Dues Deduction	3%
Personal Funds	8.5%
Health/Welfare	\$9.65
Pension	\$6.20
Apprenticeship	\$0.43
NECA Service Charge	\$0.21*
Other Deductions	\$1.38
Total Package	\$52.33
<i>To be allocated 6.2.08</i>	\$1.70
Expiration Date	05.31.09

* Applies to NECA members only

** NEBF- \$1.03, LMCC- \$0.21, Admin. Maintenance- \$0.14

Electricians Local #134

(Cook County)

600 W. Washington Boulevard

Chicago, IL 60601

Phone: (312) 454-1340 Fax: (312) 454-1528

This is the 3rd year of a 4-year agreement

Effective Date	06.02.08
Base Rate	\$39.40
Foreman Rate	\$42.00
Health/Welfare	\$10.83
Pension Plan #2	\$4.91
Pension Plan #5	\$2.65
EJATT	\$0.75
NEBF	\$1.18
LMCC	\$0.20
ASB Plan	\$2.25
Admin. Maintenance Fund	\$0.06
Drug-Free Alliance	\$0.01
Total Package	\$62.24
Expiration Date	05.31.09

Electricians Local #134

(Telecommunications)

(Cook County)

600 W. Washington Boulevard

Chicago, IL 60601

Phone: (312) 454-1340 Fax: (312) 454-1528

Effective Date	06.04.08
Base Rate	\$35.44
Foreman Rate	\$37.94
Health/Welfare	\$7.40
Annuity	\$5.00
Apprenticeship	\$0.70
Health Retirement Account	\$1.60
NEBF	\$1.06
LMCC-NLMCC	\$0.08
Sub Fund	\$0.56
Admin. Maintenance Fund	\$0.06
Drug-Free Alliance	\$0.01
Total Package	\$51.91
Expiration Date	05.31.09

Electricians Local #150

(Lake County)

31290 N. US Highway 45, Unit B

Libertyville, IL 60048

Phone: (847) 680-1504 Fax: (847) 680-0122

Effective Date	06.01.08
Base Rate	\$37.54
Foreman Rate	\$41.29
Dues Deduction	3%
Health/Welfare	\$10.51
Pension	\$3.75
Annuity	\$6.38
Holiday/Vacation	\$1.50
Apprenticeship	\$0.53
NEBF	\$1.13
LMCC	\$0.21
Admin. Maintenance Fund	\$0.15
NECA Service Charge*	\$0.23
Total Package	\$61.93
Expiration Date	05.31.09

* Applies to NECA members only

Electricians #150

(Telecommunications)

(Lake County)

31290 N. US Highway 45, Unit B

Libertyville, IL 60048

Phone: (847) 680-1504 Fax: (847) 680-0122

Effective Date	06.01.08
Base Rate	\$32.27
Foreman Rate	\$34.37
Dues Deduction	3%
Vacation	\$1.29
Health/Welfare	\$9.035
Pension	\$3.23
Annuity	\$4.52
Training	\$0.47
NEBF	\$0.97
LMCC/NLMCC	\$0.21
Admin. Maintenance Fund	\$0.13
NECA Service Charge	\$0.19*
Total Package	\$52.315
Expiration Date	05.31.09

* Applies to NECA members only

Electricians Local #176

(Will & Grundy Counties)

1100 N. I-55 E. Frontage Road

Joliet, IL 60435

Phone: (815) 729-1240 Fax: (815) 729-2176

This is a yearly agreement.

Effective Date	06.01.08
Base Rate	\$38.00
Foreman Rate	\$41.42
Dues Deduction	2.5%
Health/Welfare	\$9.67
National Pension	\$1.14
Decatur Pension	\$3.04
Local Pension	\$8.50
S.U.B. Fund	\$1.75
LMCC	\$0.28
AMF	\$0.19
NECA Service Charge	\$0.19
Apprenticeship Fund	\$0.38
Total Benefits	\$24.10
Total Package	\$63.14
Expiration Date	05.31.09

Electricians #196 Outside Linemen

(DuPage, Lake, Kane, Kendall, McHenry, & DeKalb Counties)

2400 Big Timber Road, Suite 208 Build B

Elgin, IL 60123

Phone: (847) 888-1960 Fax: (847) 888-1967

Effective Date	03.01.08
Base Rate	\$36.27
Foreman Rate	\$39.17
Dues Deduction	3%
NEBF	\$1.09
NEAP	\$9.07
LINECO	\$4.75
Safety & Education	\$0.18
ALBAT	\$0.27
Retiree	\$1.09
Total Benefits	\$16.45
Total Package	\$52.72
Expiration Date	03.01.09

Electricians Local #461

(Kendall & Southern Kane Counties)

591 Sullivan Road., Suite 100

Aurora, IL 60506

Phone: (630) 897-0461 Fax: (630) 897-7605

Effective Date	06.01.08
Base Rate	\$41.34
Foreman Rate	\$45.47
Dues Deduction	3%
Health/Welfare	\$9.095
Vacation Fund	8%
Pension	\$9.095
Training	\$0.83
Promotion	\$0.25*
Other	\$1.62**
Total Package	\$62.23
Expiration Date	05.31.09

* Applies to NECA members only

** \$1.24 NEBF; \$0.21 LMCC; \$0.17 Admin. Maint. Fund

Electricians Local #701

(DuPage County)

28600 Bella Vista Parkway, Suite 1000

Warrenville, IL 60555

Phone: (630) 393-1701 Fax: (630) 393-3560

Effective Date	06.01.08
Base Rate	\$35.25
Foreman Rate	\$38.78
Vacation	\$3.88
Health/Welfare	\$8.40
Pension	\$6.00
Annuity	\$6.23
S.U.B. Fund	\$0.20
NEBF	\$1.06
Total Payroll Package	\$61.02
Apprenticeship	\$0.56
Admin. Maintenance Fund	\$0.14
LMCC/NLMCC	\$0.21
Total Package	\$61.93
Expiration Date	05.31.09

Electricians Local #701

(Telecommunications)

(DuPage County)

28600 Bella Vista Parkway, Suite 1000

Warrenville, IL 60555

Phone: (630) 393-1701 Fax: (630) 393-3560

This is the 3rd year of a 3-year agreement
(6.1.06 through 5.31.09)

Effective Date	06.04.08
Base Rate	\$32.00
Foreman Rate	\$34.10
Health/Welfare	\$7.40
Pension	\$5.80
Annuity	\$4.43
S.U.B. Fund	\$0.20
NEBF	\$0.96
Total Payroll Package	\$51.29
Apprenticeship	\$0.48
Admin. Maintenance Fund	\$0.13
LMCC/NLMCC	\$0.21
Total Benefits	\$19.61
Total Package	\$52.11
Expiration Date	05.31.09

Elevator Constructors Local #2

(Mechanic)

300 S. Ashland Avenue, Room 206

Chicago, IL 60607

(312) 421-1440 Fax: (312) 421-7143

Effective Date	01.01.08
Base Rate	\$43.925
Mechanic in Charge Rate	\$49.42
Employee Contributions to Welfare	\$0.035
Health/Welfare	\$8.775
Annuity	\$2.00
Pension	\$4.96
Training	\$0.55
Total Benefits	\$16.465
Total Package	\$60.425
Expiration Date	12.31.09

Glaziers Local #27

4225 Lawndale Avenue

Lyons, IL 60534

Phone: (708) 443-9000 Fax: (708) 443-9007

Effective Date	06.01.08
Base Rate	\$37.00
Foreman Rate	\$38.50
Administration Deduction	2%
Health/Welfare	\$7.34
Pension	\$12.05
Training	\$0.74
Safety	\$0.04
IUPAT Labor Management Fund	\$0.05
Expense Money	\$5.00/day
Total Benefits	\$20.22
Total Package	\$57.22
Expiration Date	05.31.09

* \$6.00 Local #27 Pension, \$6.05 IUPAT Pension

Glaziers Local #1355

3813 Illinois Avenue, Suite 101

St. Charles, IL 60174

Phone: (630) 377-2120 Fax: (630) 777-2384

Effective Date	04.01.08
Base Rate	\$29.33
Dues Deduction	2%
Health/Welfare	\$6.75
Pension	\$5.00
Training	\$0.55
Labor-Mgmt. Cooperation Fund	\$0.05
LMIDF	\$0.35
Total Benefits	\$14.45
Total Package	\$43.78
Expiration Date	03.31.09

Heat & Frost Insulators Local #17

3850 S. Racine Avenue

Chicago, IL 60609

Phone: (773) 247-8184 Fax: (773) 247-6724

	Zone 1	Zone 2
Effective Date	06.01.08	06.01.08
Base Rate	\$39.90	\$38.60
Foreman Rate	\$42.40	\$41.10
Dues Deduction	\$2.09	\$2.05
Health/Welfare	\$9.17	\$9.17
Pension	\$6.76	\$6.76
Training	\$0.32	\$0.32
Annuity	\$3.70	\$3.70
Association/LMCT	\$0.20	\$0.20
Total Benefits	\$19.95	\$19.95
Total Package	\$59.85	\$58.55
Expiration Date	05.31.09	05.31.09

Ironworkers Local #1 (Bridge & Structural)

(Cook, Lake, McHenry, & DuPage Counties)

7720 Industrial Drive

Forest Park, IL 60130

Phone: (708) 366-6695 Fax: (708) 366-6691

Effective Date	06.01.08
Base Rate	\$40.25
Foreman Rate	\$42.25
Dues Deduction	1.5%
Ironworkers PAL Deduction	\$0.03
Individual Annuity	\$7.46
Health/Welfare	\$9.95
Pension	\$7.28
Training	\$0.30
Safety	\$0.01
Promotion	\$0.05
Other Deductions	\$0.64*
Total Benefits	\$25.69
Total Package	\$65.94
Expiration Date	05.31.09

* \$0.38 IMPACT, \$0.16 Local #1 Organizational Fund,
\$0.10 Local #1 Scholarship Fund

Ironworkers Local #63

(Architectural & Ornamental)

(Cook, Lake, DuPage, Kane, & McHenry Counties)

2525 W. Lexington

Broadview, IL 60153

Phone: (708) 344-7727 Fax: (708) 344-5577

Effective Date	06.01.08
Base Rate	\$39.05
Foreman Rate	*
Working Assessment	4%
Ironworkers PAL	\$0.06
Health/Welfare	\$7.95
Mid-America Pension	\$5.14
Apprentice Fund	\$0.50
Industry Advancement	\$0.07
SMA	\$2.00
Defined Contribution	\$6.05
IMPACT	\$0.30
Total Benefits	\$22.01
Total Package	\$61.06
Expiration Date	05.31.09

* 2-5 man crew-\$2.25 over scale, 6+ crew- \$3.25 over scale

Ironworkers Local #393

(Kane, Kendall, Will, DuPage & DeKalb Counties)

1901 Selmarten Road

Aurora, IL 60505

Phone: (630) 585-1600 Fax: (630) 585-6810

Effective Date	06.01.08
Base Rate	\$40.20
Foreman Rate	*
Dues Deduction	3%
Health/Welfare	\$8.14
Pension	\$5.14
Training	\$0.23
IMPACT	\$0.30
Industry Fund	\$0.03
Mid-America S.M.A. Fund	\$10.02
Total Benefits	\$23.86
Total Package	\$64.06
Expiration Date	05.31.09

* Foreman 4 and under-\$42.21, 5 and over- \$43.42
General Foreman- \$44.22

Ironworkers Local #444

(Will & Grundy Counties)

202 Oak Leaf Street

Joliet, IL 60436

Phone: (815) 725-1804 Fax: (815) 725-0147

Effective Date	06.01.08
Base Rate	\$36.00
Foreman Rate	*
Dues Deduction	3%
IPAL	\$0.03
Health/Welfare	\$8.14
Pension	\$8.26
Annuity	\$8.01
Training	\$0.60
IMPACT, Defense Fund, 3 Rivers	\$0.42
Industry Fund	\$0.07
Total Benefits	\$25.50
Total Package	\$61.50
Expiration Date	05.31.09

* Foreman+1 or 2 men- \$37.00, +3- \$39.60
General Foreman- \$43.20

Laborers District Council

(Cook, Grundy, Lake, Will & DuPage Counties)

999 McClintock Drive, Suite 300

Burr Ridge, IL 60527

Phone: (630) 655-8289 Fax: (630) 655-8853

This is the 2nd year of a 4-year agreement

(6.1.06 through 5.31.10)

Effective Date	06.01.08
Base Rate	\$34.75
Dues Deduction	2.75%
Health/Welfare	\$8.83
Pension	\$6.17
Training	\$0.27
LDCLMCC	\$0.12
LECET	\$0.05
Industry Fund	\$0.08
CISCO	\$0.01
Total Benefits	\$15.52
Total Package	\$50.27
Expiration Date	05.31.09
<i>To be allocated 6.1.09</i>	<i>\$3.10</i>

Laborers District Council

(Boone, Kane, McHenry & Kendall Counties)

999 McClintock Drive, Suite 300

Burr Ridge, IL 60527

Phone: (630) 655-8289 Fax: (630) 655-8853

This is the 3rd year of a 4-year agreement

(6.1.06 through 5.31.10)

Effective Date	06.01.08
Base Rate	\$34.75
Dues Deduction	2.75%
Health/Welfare	\$8.87
Pension	\$6.13
Training	\$0.27
LDCLMCC	\$0.12
LECET	\$0.05
Industry Fund	\$0.08
CISCO	\$0.01
Total Benefits	\$15.52
Total Package	\$50.27
Expiration Date	05.31.09

Laborers Local 75

(Will & Grundy Counties)

1923 Donmaur Drive

Crest Hill, IL 60403

Phone: (815) 729-1324 Fax: (815) 729-4269

This is the 3rd year of a 4-year agreement
(6.1.06 through 5.31.10)

Effective Date	06.01.08
Base Rate	\$34.75
Foreman Rate	\$35.75
Dues Deduction	2.75%
Health/Welfare	\$8.83
Pension	\$6.17
Training	\$0.27
LDCLMCC	\$0.12
LECET	\$0.05
Total Benefits	\$15.44
Total Package	\$50.19
Expiration Date	05.31.09

Operating Engineers Local #150

Building Class

6200 Joliet Road

Countryside, IL 60525

Phone: (708) 482-8800 Fax: (708) 482-7186

Effective Date		06.01.08
Base Rate	Group 1	\$43.80
	Group 2	\$42.50
	Group 3	\$39.95
	Group 4	\$38.20
Dues Deduction		3%
Health/Welfare		\$9.60
Health/Welfare Annuity		\$0.75
Pension		\$6.55
Training		\$1.00
Promotion		\$0.23*
Vacation		\$1.90
Total Benefits		\$20.53
Total Package	Group 1	\$64.33
	Group 2	\$63.03
	Group 3	\$60.48
	Group 4	\$58.73
Expiration Date		05.31.09

* \$0.15 Construction Industry Service & Research Trust Fund, \$0.08 Industry Advancement Fund

Operating Engineers Local #150

Heavy & Highway

6200 Joliet Road

Countryside, IL 60525

Phone: (708) 482-8800 Fax: (708) 482-7186

Effective Date		06.01.08
Base Rate	Group 1	\$42.00
	Group 2	\$41.45
	Group 3	\$39.40
	Group 4	\$38.00
	Group 5	\$36.80
Dues Deduction		3%
Health/Welfare		\$9.60
Health/Welfare Annuity		\$0.75
Pension		\$6.55
Training		\$1.00
Promotion		\$0.23*
Vacation		\$1.90
Total Benefits		\$20.53
Total Package	Group 1	\$62.53
	Group 2	\$61.98
	Group 3	\$59.93
	Group 4	\$58.53
	Group 5	\$57.33
Expiration Date		05.31.09

Operating Engineers Local #150

Great Lakes Floating Agreement

6200 Joliet Road

Countryside, IL 60525

Phone: (708) 482-8800 Fax: (708) 482-7186

Effective Date		01.01.08
Base Rate	Group 1	\$48.40
	Group 2	\$46.90
	Group 3	\$41.70
	Group 4	\$34.70
Health/Welfare		\$8.60
Health & Welfare Annuity		\$0.50
Pension		\$6.05
L-M Fund/D-B Monitoring		\$0.20
Vacation		\$1.90
Total Benefits		\$17.25
Total Package	Group 1	\$65.65
	Group 2	\$64.15
	Group 3	\$58.95
	Group 4	\$51.95
Expiration Date		12.31.09

Painters District Council #14

(Cook & Lake Counties)

1456 W. Adams

Chicago, IL 60607

Phone: (312) 421-0046 Fax: (312) 421-7884

Effective Date	06.01.08
Base Rate	\$36.90
Foreman Rate	*
Health/Welfare	\$7.35
Pension	\$8.40
Joint Cooperation	\$0.21
JATC	\$0.52
Education & Scholarship	\$0.05
Industry Advancement	\$0.11**
PAC Fund	\$0.05
Savings	\$1.00
Total Benefits	\$16.64
Total Package	\$53.54
Expiration Date	05.31.09

* 2 hours more per day for Gen. Foreman, 1 hour more for Foreman, one-half hour for Sub-Foreman

** Each Employer shall contribute to the Chicago Painting and Decorating Contractors Industry Advancement and Promotional Fund three-tenths of one percent of the hourly wage of employees covered by this agreement.

Painters District Council #30

(DuPage, Kendall, Kane, McHenry & DeKalb Co.)

1905 Sequoia Dr., Suite 201

Aurora, IL 60506

Phone: (630) 377-2120 Fax: (630) 377-2384

Effective Date	05.01.08
Base Rate	\$37.83
Dues Deduction	2%
Health/Welfare	\$6.75
Pension	\$6.75
Training	\$0.55
Defense Fund	\$0.20
LMCI	\$0.05
Total Benefits	\$14.35
Total Package	\$52.18
Expiration Date	04.30.09

Pipefitters Local #597

(Cook, Lake, Will & McHenry Counties)

45 N. Ogden Avenue

Chicago, IL 60607

Phone: (312) 829-4191 Fax: (312) 829-0137

Effective Date	06.01.08
Base Rate	\$42.05
Foreman Rate	\$45.05
Dues Deduction	\$0.40
Health/Welfare	\$7.66
Defined Contribution Fund	\$1.00
Pension	\$8.55
Training	\$1.37
LMCC	\$0.05
Promotion	\$0.30
Total Benefits	\$18.93
Total Package	\$60.98
Expiration Date	05.31.09

Plasterers Local #5

(Cook, Will, Kane, McHenry, Grundy & LaSalle Co.)

5631 W. 120th Street

Alsip, IL 60803

Phone: (708) 489-9900 Fax: (708) 489-9810

This is the 2nd year of a 4-year agreement
(7.1.07 through 6.30.11)

Effective Date	07.01.08
Base Rate	\$38.10
Foreman Rate	\$40.39
Dues Deduction	\$2.47
Health/Welfare	\$7.50
Pension	\$4.44
Training	\$0.40
Promotion	\$0.40
Safety	\$0.01
Retirement Savings	\$4.00
Total Benefits	\$16.75
Total Package	\$54.85
Expiration Date	06.30.09
<i>To be allocated 7.1.09</i>	\$3.25
<i>To be allocated 7.1.10</i>	\$3.40

Plasterers Local #11, Area 362

(Lake County)

28874 W. Rand Road, Unit B

Lakemoor, IL 60051

Phone: (815) 363-6933 Fax: (815) 363-6934

Effective Date	06.01.08
Base Rate	\$38.50
Dues Deduction	\$1.87
Savings/Vacation	\$2.50
Health/Welfare	\$8.25
Pension	\$5.83
Apprenticeship	\$0.15
Industry	\$0.08
Tax Deferred Income Fund	\$4.50
Total Benefits	\$18.81
Total Package	\$57.31
Expiration Date	05.31.09

Plasterers BAC Locals #56 & #74

Local 56

371 S. Main Pl.
Carol Stream, IL 60188
Phone: (630) 653-5920

Local 74

6422 W. Cass Ave.
Westmont, IL 60559
Phone: (630) 964-7300

Effective Date	07.01.08
Base Rate	\$37.20
Foreman Rate	\$39.43
Dues Deduction	2.8%
Health/Welfare	\$8.00
Pension	\$4.97
Annuity	\$3.50
IPF	\$0.60
DCTC	\$0.28
IMI	\$0.48
Safety	\$0.01
Total Package	\$55.04
Expiration Date	06.30.09

Plumbers Local #93

(Lake & McHenry Counties)

31855 N. US Highway 12

Volo, IL 60073

Phone: (815) 759-5900 Fax: (815) 759-5978

Effective Date	06.01.08
Base Rate	\$41.55
Foreman Rate	\$43.80
Dues Deduction	\$1.25
Health/Welfare	\$9.27
Pension	\$4.05
Retirement	\$4.40
Training	\$0.80
Promotion	\$0.35
Total Benefits	\$18.87
Total Package	\$60.42
Expiration Date	05.31.09

Plumbers Local #130

(Cook & Will Counties)

1340 W. Washington St.

Chicago, IL 60607

Phone: (312) 421-1010 Fax: (312) 421-6724

Effective Date	06.01.08
Base Rate	\$43.00
Foreman Rate	\$45.00
Dues Deduction	\$0.32
Health/Welfare	\$9.11
Pension	\$5.96
Education	\$1.13
Promotion	\$0.59
Legal Services	\$0.61
401k / Other Savings	\$1.50
Total Benefits	\$17.40
Total Package	\$60.40
Expiration Date	05.31.09

Plumbers & Pipefitters Local #422

(Will & Grundy Counties)

2114 S. I-80 Frontage Road

Joliet, IL 60436

Phone: (815) 725-0278 Fax: (815) 725-0594

This is a yearly agreement.

Effective Date	06.01.08
Base Rate	\$42.00
Foreman Rate	\$44.00
Dues Deduction	2.25%
Health/Welfare	\$8.50
Pension	\$9.00
Training	\$1.11
Promotion	\$0.37
Total Benefits	\$18.98
Total Package	\$60.98
Expiration Date	05.31.09

Plumbers & Pipefitters Local #422

(Kankakee & Iroquois Counties)

2114 S. I-80 Frontage Road

Joliet, IL 60436

Phone: (815) 725-0278 Fax: (815) 725-0594

This is a yearly agreement.

Effective Date	06.01.08
Base Rate	\$40.61
Foreman Rate	\$42.61
Dues Deduction	2.25%
Health/Welfare	\$8.50
Pension	\$9.00
Training	\$1.11
Promotion	\$0.39
Total Benefits	\$18.99
Total Package	\$59.61
Expiration Date	05.31.09

Plumbers & Pipefitters Local #501

(DuPage, Kane, Kendall & DeKalb Counties)

1295 Butterfield Road

Aurora, IL 60564

Phone: (630) 978-4501 Fax: (630) 978-4040

Effective Date	06.01.08
Base Rate	\$39.50
Foreman Rate	\$41.50
Dues Deduction	3%
Health/Welfare	\$9.20
Pension	\$5.99
Retirement Fund	\$4.25
Education Fund	\$1.06
International Training Fund	\$0.10
Promotion	\$0.30
U.A. PAC	\$0.01
Total Benefits	\$20.90
Total Package	\$60.40
Expiration Date	05.31.09

Roofers Local #11

(Northeastern Illinois)

9838 W. Roosevelt Road

Westchester, IL 60154-2782

Phone: (708) 345-0970 Fax: (708) 345-0981

Effective Date	06.01.08
Base Rate	\$36.40
Foreman Rate	\$39.40
Health/Welfare	\$6.80
Pension	\$2.87
Reserve Fund	\$0.05
International Pension	\$1.00
Advancement & Research	\$0.11
Apprenticeship & Training	\$0.33
Promotion	\$0.11
Vacation Deduction	\$0.50
Total Benefits	\$11.27
Total Package	\$47.67
Expiration Date	11.30.09

Sheet Metal Workers Local #73

(Cook & Kane Counties)

4550 Roosevelt Road

Hillside, IL 60162

Phone: (708) 449-0073 Fax: (708) 449-7337

Effective Date	06.01.08
Base Rate	\$39.13
Foreman Rate	\$42.26
Health/Welfare	\$8.51
Local Pension	\$4.66
National Pension	\$3.02
Training	\$0.61
Promotion	\$0.18
Annuity Fund	\$4.15
Industry Advancement	\$0.37
Other Deductions	\$1.93*
Total Benefits	\$22.12
Total Package	\$61.25
Expiration Date	12.31.09

* \$1.50 Savings, \$0.29 Organizing/Education, \$0.10 Building Fund, \$0.04 Per capita Tax

Sheet Metal Workers Local #265

(DuPage, Kane, Kendall, McHenry, Will, Grundy,
Kankakee, Iroquois & Livingston Counties)

205 Alexandra Way

Carol Stream, IL 60188-2198

Phone: (630) 668-0110 Fax: (630) 668-0932

	A&C Members	B Members
Effective Date	06.01.08	6.1.08
Base Rate	\$40.51	\$39.57
Health/Welfare	\$7.41	\$7.41
Pension Local/Nat'l	\$4.87	\$5.81
Education Fund	\$0.86	\$0.86
Industry Fund	\$0.21	\$0.21
Annuity		\$4.25
SASMI 3%	\$1.73	\$1.63
Total Benefits	\$19.83	\$20.77
Total Package	\$60.34	\$60.34
Expiration Date	05.31.09	05.31.09
To be allocated 6.1.09	\$3.60	\$3.60

Sprinkler Fitters Local #281

(Northeastern Illinois)

11900 S. Laramie

Alsip, IL 60568

Phone: (708) 597-1800 Fax: (708) 597-1894

Effective Date	06.01.08
Base Rate	\$43.00
Foreman Rate	\$46.00
N.A.S.I. Pension Fund	\$3.20
Supplemental Pension Fund	\$3.75
Health & Welfare	\$8.50
International Training Fund	\$0.10
Apprenticeship Training Fund	\$0.45
Promotion	\$0.60
Total Benefits	\$16.63
Total Package	\$59.63
<u><i>Deductions from Wages</i></u>	
Union Protection Fund	\$0.90
Pay Day Savings (<i>Journeyman/Appren.</i>)	\$1.25/0.50
Expiration Date	05.31.09

Teamsters Local #179

(Will & Grundy Counties)

1000 NE I-55 Frontage Road

Joliet, IL 60435-2797

Phone: (815) 741-2200 Fax: (815) 741-2278

Effective Date		06.01.08
Base Rate-	Group 1	\$35.65
	Group 2	\$35.80
	Group 3	\$36.00
	Group 4	\$36.20
	Group 5	\$37.20
	Group 6	*
Health/Welfare		\$6.25
Pension		\$171/wk
Training		\$10/wk
Other		\$3.60**
Total Package-	Group 1	\$46.43
	Group 2	\$46.58
	Group 3	\$46.78
	Group 4	\$46.98
	Group 5	\$47.98
Expiration Date		05.31.09

* An additional \$0.20 per axle shall be paid for all vehicles with more than 6 axles

** \$2.80 Will-Grundy Industry Advancement Trust, \$0.80 Three Rivers Alliance

Teamsters Local #301

(Lake & McHenry Counties)

36990 N. Green Bay Road

Waukegan, IL 60087-3401

Phone: (847) 623-5430 Fax: (847) 623-5795

Effective Date		06.01.08
Base Rate-	Group 1	\$32.20
	Group 2	\$32.35
	Group 3	\$32.55
	Group 4	\$32.75
Health/Welfare		\$218/wk
Pension		\$210/wk
Joint Council 25 Training Fund		\$0.15*
Construction Safety Council		\$0.01*
CISCO		\$0.01*
MARBA		\$0.06*
Total Benefits		\$11.43
Total Package-	Group 1	\$41.63
	Group 2	\$41.78
	Group 3	\$41.98
	Group 4	\$42.18
Expiration Date		05.31.09

* Each Hour Worked. Not to be deducted from employees' wages. Please issue checks payable to Chicagoland Construction Safety Council, CISCO, MARBA, and Teamsters J.C 25 Training Fund and mail to Local 301 Office

Teamsters Local #330

(DuPage & Kane Counties)

2400 Big Timber Road, Building B, Suite 201

Elgin, IL 60123-7835

Phone: (847) 695-1516 Fax: (847) 695-1579

Effective Date	06.01.08
Base Rate-	Group 1 \$32.55 Group 2 \$32.70 Group 3 \$32.90 Group 4 \$33.10
Health/Welfare	\$260/wk
Pension	\$174/wk
Article 8 Training Fund	\$0.15
Safety	\$0.01
CISCO	\$0.01
MARBA	\$0.06
Expiration Date	05.31.09

Teamsters Local #673

(DuPage & Kane Counties)

1050 W. Roosevelt Road

West Chicago, IL 60185

Phone: (630) 231-6660 Fax: (630) 231-6168

Effective Date		06.01.08
Base Rate-	Group 1	\$32.55
	Group 2	\$32.70
	Group 3	\$32.90
	Group 4	\$33.10
Health/Welfare		\$260/wk
Pension		\$174/wk
Article 8 Training Fund		\$0.15
Safety		\$0.01
CISCO		\$0.01
MARBA		\$0.06
Expiration Date		05.31.09

Teamsters Local #731

Traffic Safety, Daily Rental, Contract Installation &
Mechanical Service

1000 Burr Ridge Parkway

Burr Ridge, IL 60527

Phone: (630) 887-4100 Fax: (630) 887-4112

Effective Date		06.01.08
Base Rate-	Group 1	\$30.70
	Group 2	\$30.95
	Group 3	\$31.15
	Group 4	\$31.35
Health/Welfare		\$6.75
Pension		\$5.45
J.C. #25 Training Fund		\$0.15
CISCO		\$0.01
MARBA		\$0.06
Total Benefits		\$12.42
Total Package-	Group 1	\$43.12
	Group 2	\$43.37
	Group 3	\$43.57
	Group 4	\$43.77
Expiration Date		05.31.09

Teamsters Local #786

(Cook County)

300 S. Ashland Avenue, Suite 501

Chicago, IL 60607-2766

Phone: (312) 666-2750 Fax: (312) 666-7943

Effective Date		06.01.08
Base Rate-	Group 1	\$31.325
	Group 2	\$31.575
	Group 3	\$31.725
	Group 4	\$31.925
Health/Welfare		\$285/wk
Pension		\$178/wk
Training		\$0.10
CISCO		\$0.01
MARBA		\$0.06
Expiration Date		05.31.09

Technical Engineers Local #130

1340 W. Washington Boulevard

Chicago, IL 60607

Phone: (312) 421-1010 Fax: (312) 421-6724

Effective Date	06.01.08
Base Rate	\$40.03
Dues Deduction	\$0.32
Health/Welfare	\$9.11
Pension	\$5.86
Education	\$0.15
Industry	\$0.04
Safety	\$0.01
401k	\$1.50
Total Benefits	\$15.17
Total Package	\$55.20
Expiration Date	05.31.09

Terrazzo Mechanics #67 (BAC)

6425 S. Central Avenue

Chicago, IL 60638

Phone: (773) 884-6500 Fax: (773) 735-9815

Effective Date	06.01.08
Base Rate	\$37.39
Foreman Rate	\$41.39
Dues Deduction	\$1.79*
Health/Welfare	\$6.15
Pension	\$3.35
Bricklayers Int'l Pension Fund	\$2.00
Int'l Masonry Institute	\$0.35
Apprenticeship Fund	\$0.12
Local 67 PAC Fund	\$0.01
Local 67 Annuity Fund	\$5.76
Total Benefits	\$17.74
Total Package	\$55.13
Expiration Date	05.31.09
<i>To be allocated 6.1.09</i>	\$3.40

* \$1.24 Local, \$0.55 International

Terrazzo Finishers Local #67

6425 S. Central Avenue

Chicago, IL 60638

Phone: (773) 884-6500 Fax: (773) 735-9815

Effective Date	06.01.08
Base Rate	\$33.81
Dues Deduction	\$1.63*
Health/Welfare	\$6.15
Pension	\$3.35
Local 67 PAC Fund	\$0.01
Apprenticeship	\$0.22
Local 67 Annuity	\$5.00
BAC Int'l Pension	\$1.50
Int'l Masonry Institute	\$0.14
Total Benefits	\$16.37
Total Package	\$50.18
Expiration Date	05.31.09
<i>To be allocated 6.1.09</i>	\$3.00

* \$1.13 Local, \$0.50 International

Tuckpointers Local #52

1111 S. Western Avenue

Chicago, IL 60612

Phone: (312) 243-3340 Fax: (312) 243-3458

This is the third year of a 4-year agreement
(6.1.06 through 5.31.10)

Effective Date	06.01.08
Base Rate	\$38.20
Foreman Rate	\$39.20
Dues Deduction	\$1.55/hr
Health/Welfare	\$6.58
Pension	\$4.77
IPF	\$1.00
Apprenticeship Trust	\$0.28
IMI	\$0.52
Promotion	\$0.14
Safety	\$0.01
Annuity	\$3.78
Total Package	\$55.28
Expiration Date	05.31.09
To be allocated 06.01.09	\$3.10

NOTES

Do You Need Additional Copies of the Wage Guide?

**Call the CISCO Office at
630.472.9411**

or

**Visit us online at
www.cisco.org**

**The most current wage and benefit
rates are available on our website at:**

www.cisco.org/wages.htm



**Construction Industry
Service Corporation**

616 Enterprise Dr., Suite 100

Oak Brook, Illinois 60523

Phone: (630) 472-9411

Fax: (630) 472-9413

Web: www.cisco.org

Published: 10/08